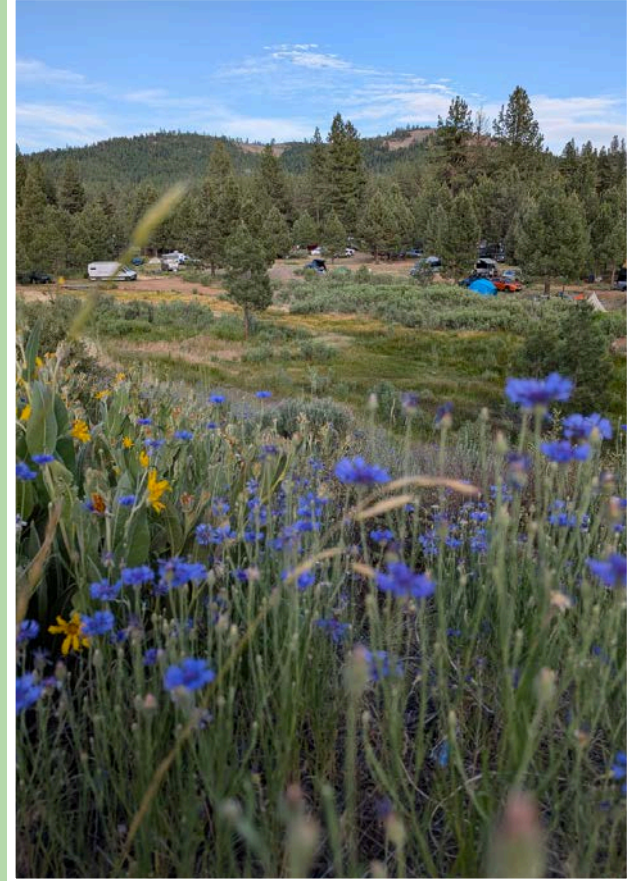


LOST & FOUND
GRAVEL FESTIVAL

PRESENTED BY
EVIL™



June 12-13, 2026
Portola, CA



RIDER GUIDE - TABLE OF CONTENTS

- About Lost & Found 3
- Impact & Gravel Earth Pro Category Rules 4
- General Event & Festival Schedule 5-6
- Camping 7-8
- Event Parking 9
- Packet Pickup Details 10
- The Ride- Race Categories, Routes & Start Times 11-15
 - Full Bull 13
 - Mid Moo 14
 - Half Calf 15
- Cut-Off Times & Course Markings 16
- Etiquette & Timing 17
- Rules of the Road & Common Sense 18-20
- Everything Else 21-22
 - Cancellation, Transfers, & Category Changes
 - Prizes & Awards
 - Neutral Roll-Out Start
 - Plumas National Forest
- About SBTS & Donation Drawing 23
- Other SBTS Events 24
- Lost & Found Partners 25
- Non-Racing Camper Required Waivers 26



EPICALLY BEAUTIFUL BIKE RIDE



The 2026 Lost & Found Gravel Festival will be an epically beautiful high Sierra weekend of gravel racing, camping, live music and fun. Come for the challenge, stay for connection. **99, 58 and 40-mile rides** and **famously fun aid stations** make this one to remember.

NEW for 2026: We've worked with our USFS partners to access to the 24N10 road west of Lake Davis and the Lake Davis Trail, allowing us to create 3 new routes we know you'll love.

Founded in 2014, the Lost & Found is recognized as one of the "Toughest Gravel Rides in the West". 2026 marks the **11th running** of this glorious event. Our festival events are an important element in funding our 501c3 non-profit, the Sierra Buttes Trail Stewardship, and our **mission to revitalize local communities** using trails as the tool.

LOCALLY DESIGNED • SUSTAINABLY SOURCED • ETHICALLY MADE



THE *Lost Sierra* COMPANY

Quality mountain wear, designed for earthy folks invested in social equity, environmental stewardship, playing hard, and sleeping under the stars.

25% off use code FOUND25 at checkout



THELOSTSIERRACOMPANY.COM



Where Your Money Goes



Lost & Found race fees help support the Sierra Buttes Trail Stewardship nonprofit and our mission to enhance, restore and maintain recreational trails in the Plumas, Lassen and Tahoe National Forests, in partnership with the U.S. Forest Service. Since the Stewardship was founded in 2003, our crews have built 227 miles of new trail, maintained more than 3,000 miles and engaged volunteers in 140,000 hours. Your participation in Lost & Found helps us create some of the best trails in the west, while allowing communities in the Sierra Buttes region to thrive, keeping the dream of mountain living alive and well. Thank you for your continued support.

Gravel Earth Series Info: Pro Category

In accordance with the **Gravel Earth Series regulations**, the following rules will be instituted for the **PRO category**:

1. Pro Men may ONLY draft off of Pro Men
2. Pro Women may ONLY draft off of Pro Women
3. Drafting across genders and categories is prohibited

Lost & Found Event Rules: There is **NO external assistance** on course. Be prepared to be fully self supported or utilize course aid stations.

Gravel Earth Series



GENERAL EVENT & FESTIVAL SCHEDULE

Tuesday, June 9th through Sunday, June 14th

Camping open. Reserve your camping spot through your [BikeReg](#) registration today! You must have a camping pass to access camping areas.

Friday, June 12th

10AM: Shakeout Ride @ Lake Davis.

- Meet at the Lake Davis Lightning Tree Boat Ramp ([Google Maps](#))
- [RSVP Here!](#)
- Route: [Lake Davis Loop](#), preview some of the race course on a mellow, pace yourself ride with friends
- *Limited shuttles* available from Portola City Park to Lake Davis and back! [Click here to book](#)

3PM - 7PM: On Site Registration and Packet Pickup

- Food Truck Options
- Adult beverages available - 3:00pm to 7:00pm
 - All beverage proceeds go to trails too!
 - Registered racers get a beverage ticket to be used Friday or Saturday



Saturday, June 13th

6AM - 8AM: Packet pickup (no registration)

- Coffee available for purchase from [Piqued Coffee](#)

Race Start:

7:30AM for Full Bull Pro Men

7:45AM for Full Bull Pro Women

8AM for all other Full Bull riders

9AM for Mid Moo and Half Calf riders

12PM - 8PM: Lost & Found Expo

- Post ride meal (12-6pm) for registered racers
- Food trucks available
- Booths from Sierra Buttes Trail Stewardship, Yuba Expeditions, event sponsors and more



GENERAL EVENT & FESTIVAL SCHEDULE (cont.)

Saturday, June 13th (cont.)

12 - 5:30PM: Bike Wash

12 - 7:30PM: Bike Valet

3 - 5PM: Awards Ceremony

5PM: Free Kids Races

- Kid's races around the park beginning at 5PM - all ages welcome. Three groups from small to tall. This is a fun race just for the kids to have some fun on their bikes too - sponsored by Your Favorite Cyclist. Please complete a regular racer waiver for your child if they plan to participate. Onsite registration will also be available beginning at 3:30PM. Helmets are mandatory. Bikes not provided

6PM: Live Music from The Alex Lucero Band- California Soul/Americana Music



Sunday, June 14th

7AM - 10AM: Pancake Breakfast at Portola Park

- Pancake Breakfast at Portola City Park, produced by the Beckwourth Peak Fire Protection District. Donation required, all proceeds benefit the local fire department that helps keep racers safe on race day! Coffee, pancakes, eggs & sausage. \$12.



CAMPING

The City of Portola is offering fun and safe campsites located within the City. Choose to camp for up to 5 days during the race in a relaxed, family friendly atmosphere. Camping includes sites right in town along the Feather River.

- Camping will be available from Tuesday, June 9th through Sunday morning, June 14th.
- Showers for campers available at Portola City Park for camping duration, and additional showers available at Portola Junior Senior High school on race day, post-race between 2-7PM.



Camping reservations through
BikeReg required.



- Individual campsites can accommodate a maximum of one vehicle, two tents and four adults.
- All camping setups welcome, NO hookups.
- First come, first serve (Riverside, West End Park, Baldwin Park).
- Grass, dirt, wildflowers, integrated single track, and a bike path in the Riverwalk camping area.
- Porta potties and/or established bathrooms onsite.
- Showers at the park, included in the camping fee.
- Ride your bike EVERYWHERE (local restaurants, businesses, and the park venue, start/finish).
- Support local businesses.
- Remember to bring your lock.

All family members camping with racers MUST complete an event waiver via [THIS GOOGLE FORM](#). Parents must complete a waiver for any family members camping under the age of 18. Alternatively, you may print and complete the waiver at the end of this rider guide and have them ready to turn in to the Camp Hosts upon arrival.



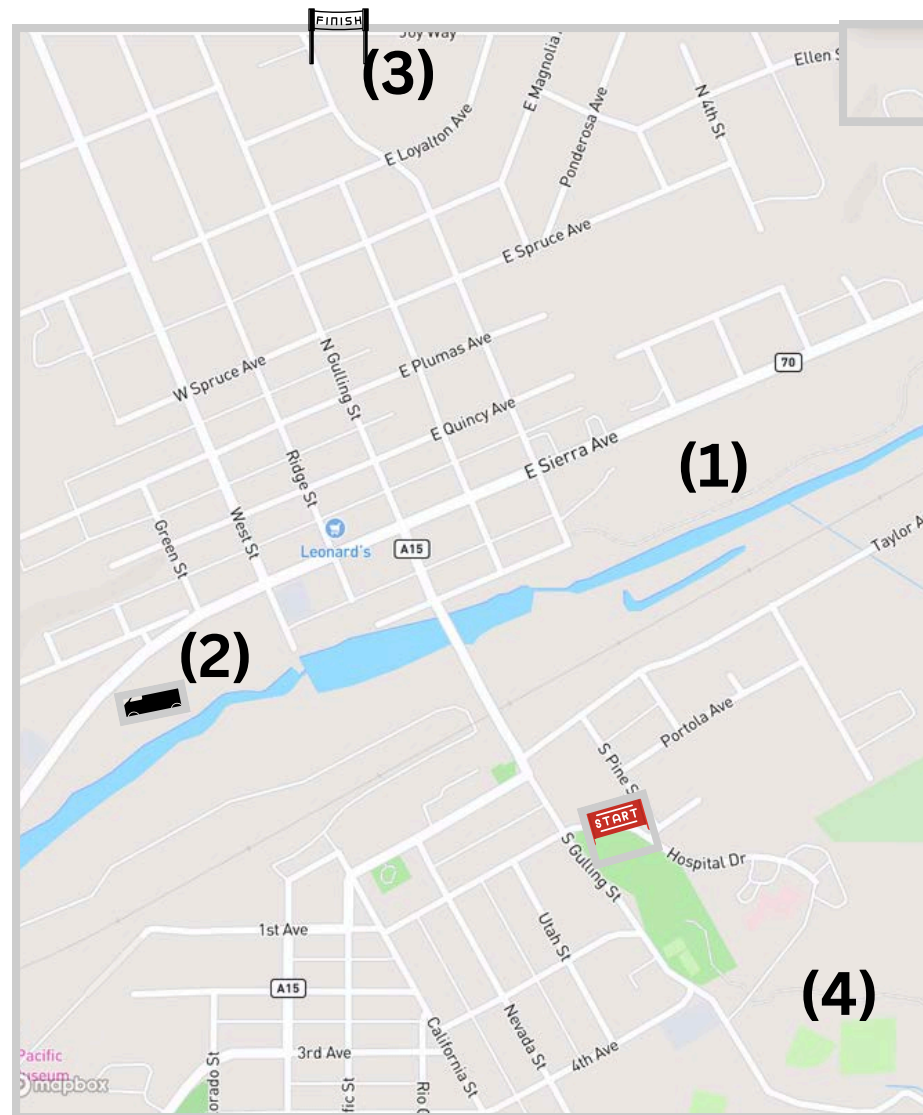
For all camping, you will must have a reservation through the BikeReg system.

- The first come, first serve camping passes, reservable through BikeReg, allow camping in Locations 1-3.
- Location 4, the ballfields, requires a separate reservable pass.

The week of the event, you will be emailed a camping permit with your specifically reserved dates listed. You must print and display this permit on your vehicle or tent.

CAMPING LOCATIONS

1. Riverwalk Camping: Immediately across the river from The Portola City Park race venue. Lots of flat areas, dirt grass, open and in the trees - Picnic tables, water, bathrooms, bike path, river views. RV's/trailers are okay.
2. West End Park: Preferred sprinter van area - 40 sprinter van capacity, flat riverside area, picnic tables, dirt trail connects to alley to bridge - 5 min ride away from park venue
3. Baldwin Park: NEW- the race finishes is at this park! Pump track, playground, water and bathrooms.
4. Ball Field Reservable Camping: Gulling Street, after 1st Ave. Capacity for 30 vehicle campers in a shaded dirt area and 40+ tent campers on the ball field grass. Steps from city park and the race start/expo.



EVENT PARKING

Parking

Event parking will be available near Portola City Park.

If you are coming to Portola from the west on CA-70, there is road construction and you may face up to a 45 minute delay.

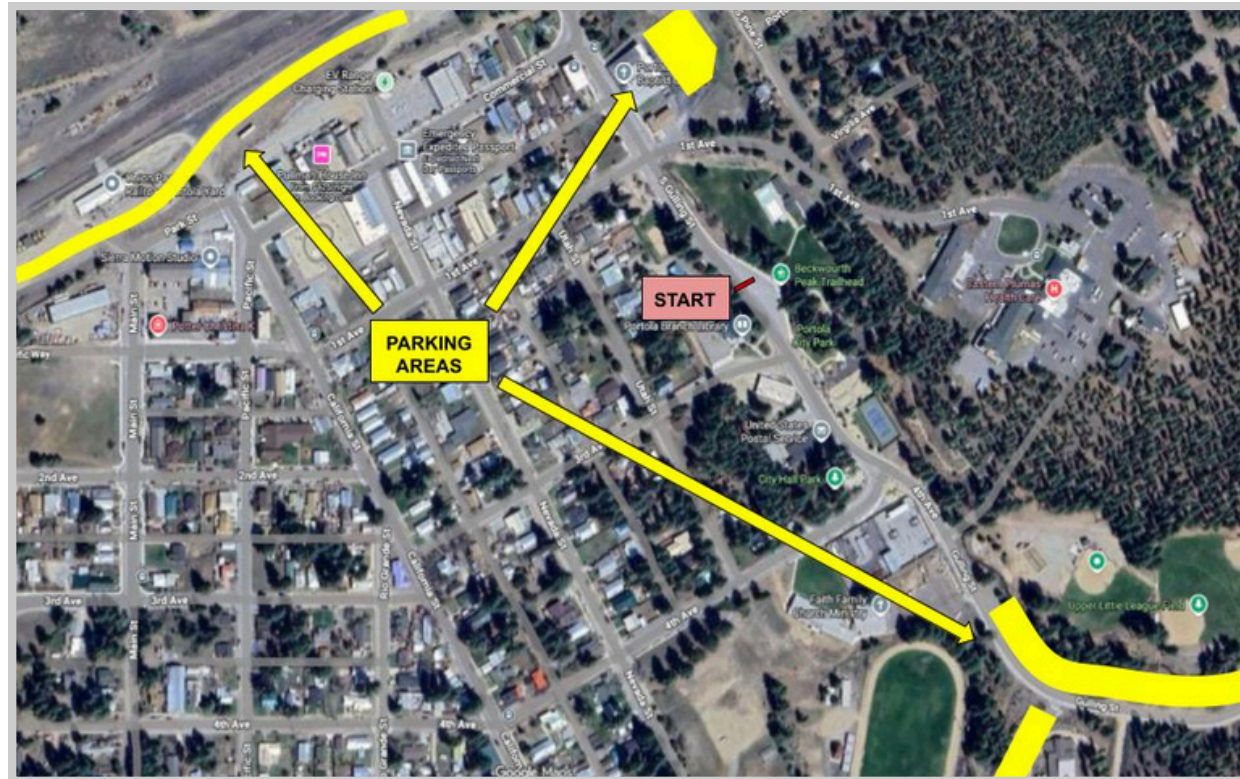
Parking on race day:

- Portola Station Baptist Church parking lot (just north of city park): 171 S. Gulling St, Portola, CA 96122
- Portola Rail Yards between Commercial St./First Ave./Western Pacific Way and Middle Fork Feather River
- South of City Park on Gulling Street near the ball fields

NO PARKING ALLOWED on S. Gulling St. between Portola City Park and S Gulling St. Bridge. Vehicles will be TOWED!

(This is the street with the bridge over the river next to the venue)

No Event Day parking at Portola City Park



PACKET PICKUP DETAILS

Days & Times

- **Friday, June 12th, 3PM - 7PM: On Site Registration and Packet Pickup**
 - Late registration allowed on Friday, June 12th only
- **Saturday, June 13th, 6 AM - 8 AM: Packet Pickup, NO DAY OF REGISTRATION**
 - All Pro Racers must pick up by 7:15 AM
 - All Full Bull Racers must pick up by 7:30 AM

What You Need

- Valid picture ID
- Minors must have a parent/guardian with ID
- Completed and signed waiver IF registering onsite



NO ON-SITE TRANSFERS- TRANSFER WINDOW ENDS June 10th

Having a friend pick up your packet? You will need fully signed packet pickup forms and a copy of their photo ID.



THE RIDE

The 2026 Lost & Found Gravel Festival features **three outstanding new routes**, certain to challenge and delight all level of riders.



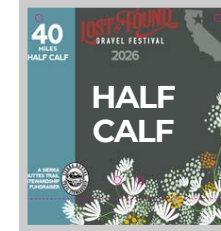
FULL BULL- 99 miles

5,946 foot elevation gain
84% dirt
5 Aid Stations



MID MOO- 58 miles

3,564 foot elevation gain
70% dirt
3 Aid Stations



HALF CALF- 40 miles

2,850 foot elevation gain
60% dirt
2 Aid Stations

All routes start in Portola at the City Park and lead into the surrounding mountains through some of the most beautiful and vast alpine valleys California has to offer.

NEW for 2026: All routes finish on Joy Way near Baldwin Park on the north side of town. From the finish, **racers must slow roll themselves back to City Park via Gulling Street for event festivities.**

Participants can choose to race or ride the route and take advantage of the quality aid stations. Racers and riders from around the world will be invited to lose themselves and find this two-wheeled paradise.



PODIUM CATEGORIES

Pro Men and Women will each be racing for an equally split \$3,500 cash purse. All other categories will be racing for 3 deep podium awards from our great sponsors.

FULL BULL

- Pro Men/Pro Women
- Adult: Women and Men categories, with age groups of 30 & Under, increasing by age groups of 10 years (31-40, 41-50, etc).
- Junior: 13-18 years of age (determined as of December 31 of the current year)
- Singlespeed Open

MID MOO

- Adult: Women and Men categories, with age groups of 30 & Under, increasing by age groups of 10 years (31-40, 41-50, etc).
- Junior: 13-18 years of age (determined as of December 31 of the current year)
- Singlespeed Open

HALF CALF

- Adult: Women and Men categories - Open. Awards for top male & female.
- Junior: 13-18 years of age (determined as of December 31 of the current year). Podium 3 deep.



FULL BULL ROUTE

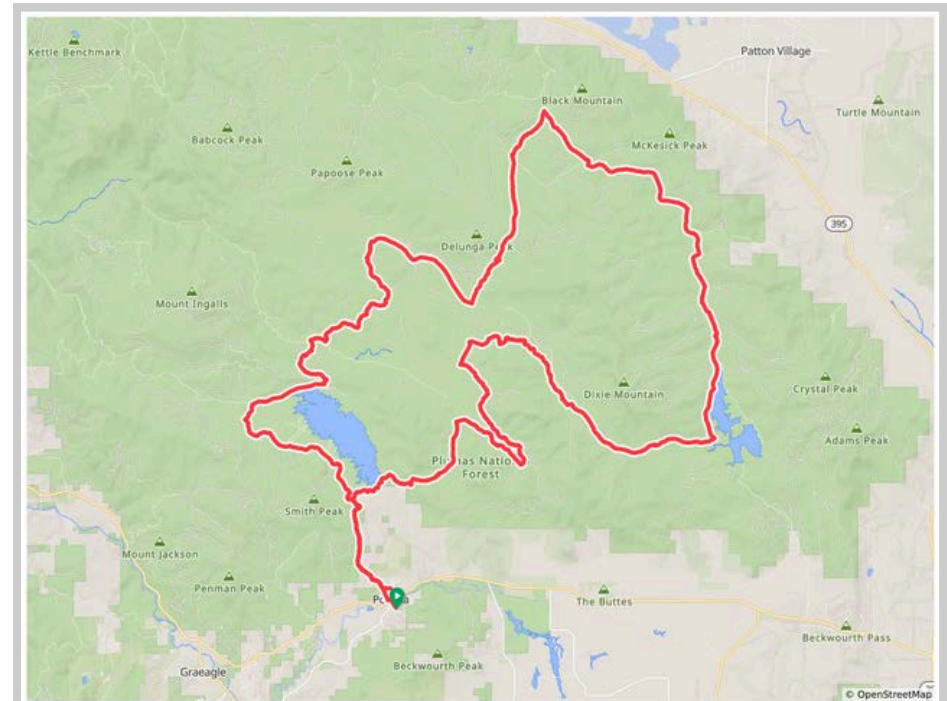


Ride Start Times

- 7:30AM: Pro Men
- 7:45AM: Pro Women
- 8:00AM: All other Full Bull racers
- Timing for all categories will begin at the start at Portola City Park
- All categories must stage at least 15 minutes prior to start time for instructions on completing the ride

Aid Stations

- Aid Station #1 at 20 miles
- Aid Station #2 at 42.9 miles
- Aid Station #3 at 62 miles
- Aid Station #4 at 77.4 miles
- Aid Station #5 at 89 miles

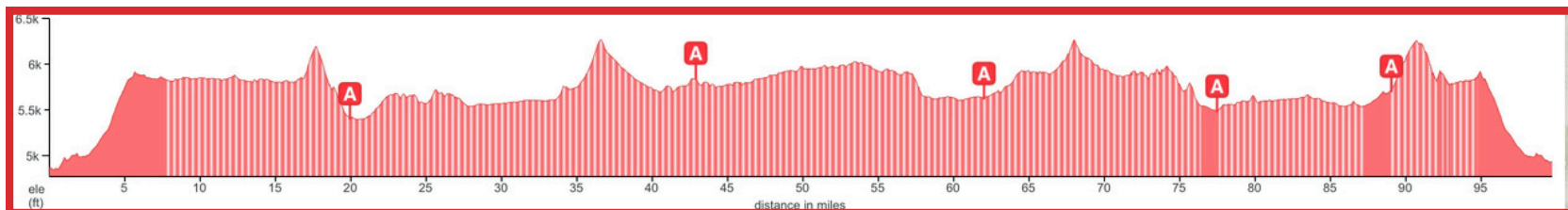


Lost & Found 2026- Full Bull

99.7 mi
DISTANCE

5,946 ft
ELEVATION GAIN

9.9 %
MAX GRADE



MID MOO ROUTE

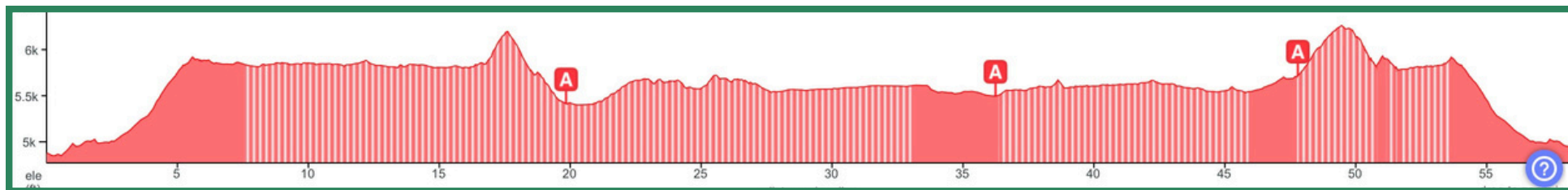
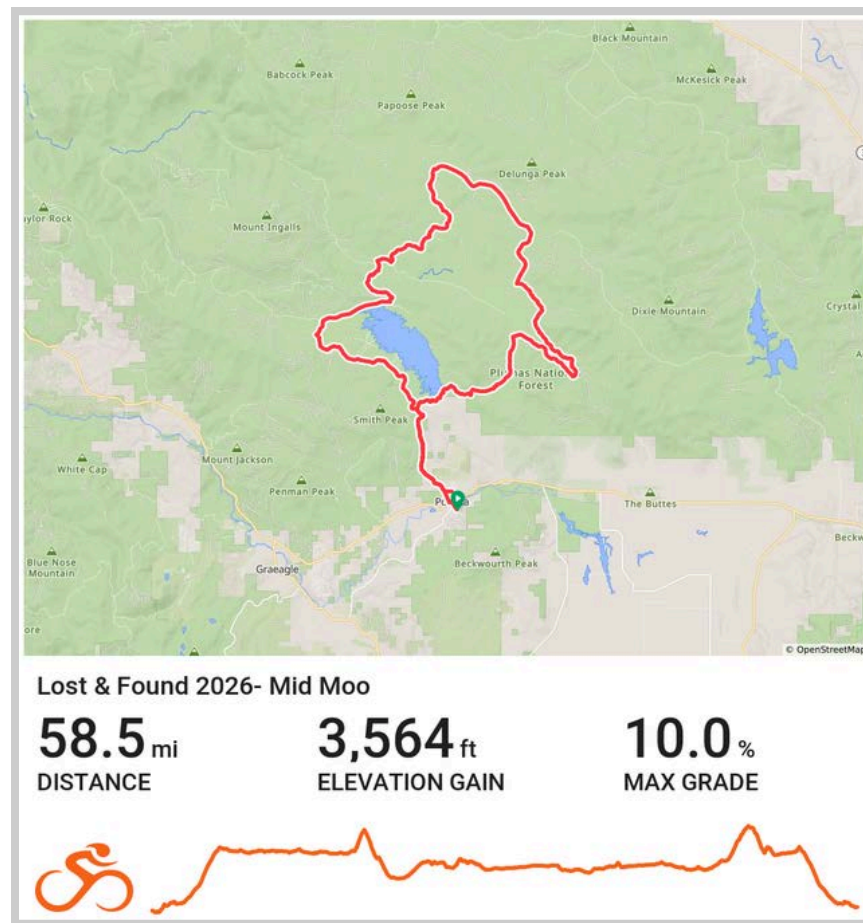


Ride Start Time

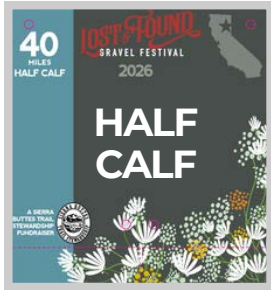
- 9:00AM
- Timing for all categories will begin at the start at Portola City Park
- All categories must stage at least 15 minutes prior to start time for instructions on completing the ride

Aid Stations

- Aid Station #1 at 20 miles
- Aid Station #2 at 36.2 miles
- Aid Station #3 at 47.8 miles



HALF CALF ROUTE

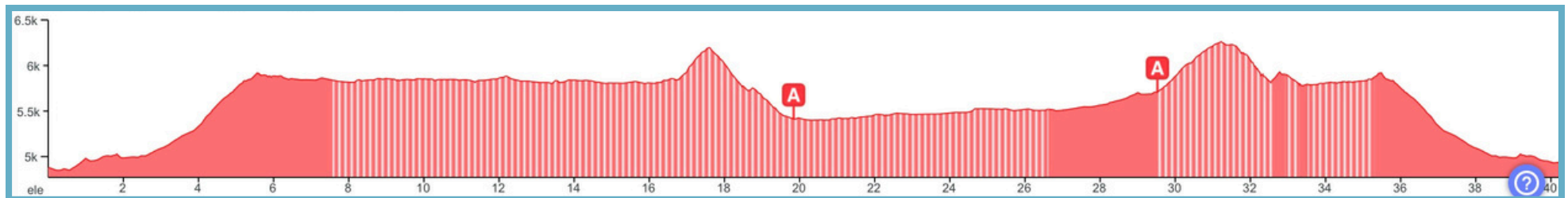
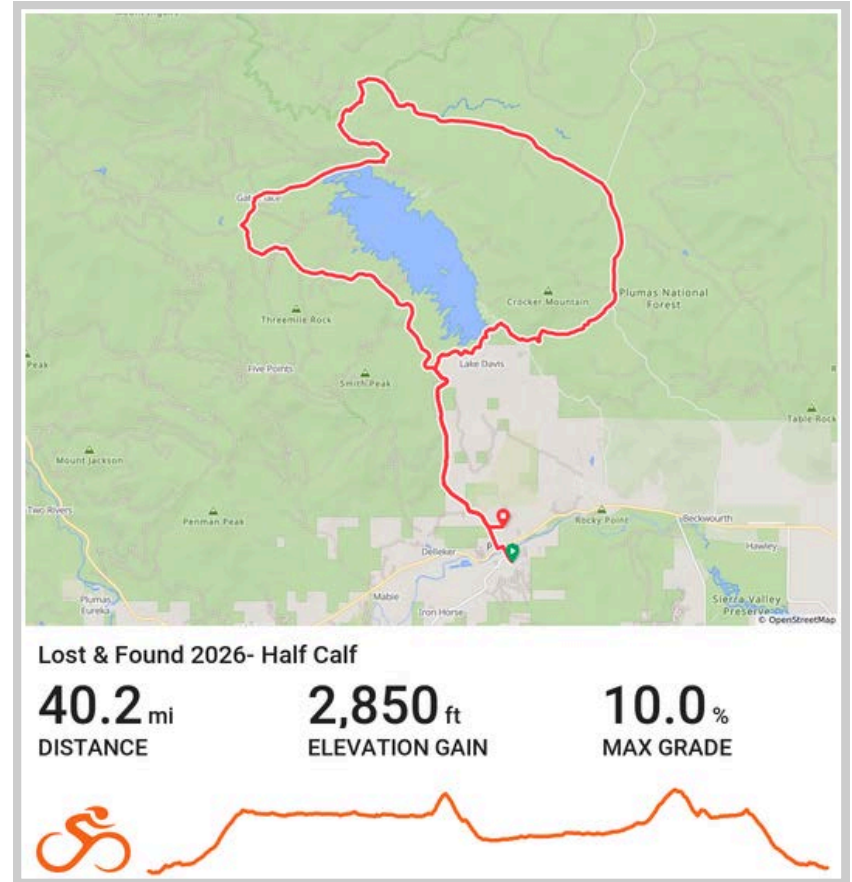


Ride Start Time

- 9:00AM
- Timing for all categories will begin at the start at Portola City Park
- All categories must stage at least 15 minutes prior to start time for instructions on completing the ride

Aid Stations

- Aid Station #1 at 20 miles
- Aid Station #2 at 29.5 miles



CUT-OFF TIMES & COURSE MARKINGS

Cut-Off Times

If at anytime an STBS staff member, or a member of the emergency response team, determines a rider is physically unable to complete the event within the allotted time frame, you must accept a ride back to the emergency response center at the Portola City Park/Finish area.

Course officials reserve the right to remove and “DNF” any rider from the event that is deemed incapable of safely finishing the course for any reason.

If you do not make the cut-off time or are unable for any reason to finish, please DO NOT go through the finish line as it will foul-up our results!



FULL BULL- 99 miles

Aid 2 (42.9mi) - 12:30 PM
Aid 4 (77.4mi) - 3:45 PM
Aid 5 (89mi) - 5 PM



MID MOO- 58 miles

Aid 2 (36.2mi) - 2 PM
Aid 3 (47.8mi) - 3:30 PM



HALF CALF- 40 miles

Aid 2 (29.5mi) - 1:30 PM

Course Markings

ORANGE FLAGGING

Orange Confidence flagging will be placed along the routes.



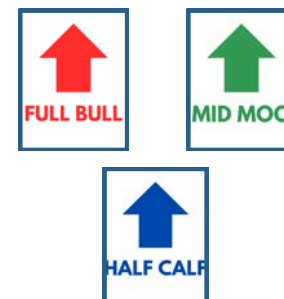
DIRECTIONAL SIGNAGE

Course directional signage is yellow in color.



ROUTE SPLITS

Route splits will be designated with color coded & labeled directionals, corresponding to the routes.



The responsibility of keeping on the prescribed course rests with the rider. It is the rider's responsibility to know the designated ride route.



Rider Etiquette

- Be nice.
- Stop at all stop signs.
- Don't be rude (we really, really mean this, you WILL be banned from any SBTS & Breakaway Promotions events for this).
- Pick up your trash.
- Stay on the RIGHT SIDE of the roads ALWAYS, whether there is a center road line or not.
- **Lake Davis Trail singletrack section:** Pass on LEFT, pull over on RIGHT. Communicate loudly and clearly. BE KIND.

YOU ARE RESPONSIBLE FOR STAYING RIGHT OF CENTER AT ALL TIMES, AS WELL AS OBSERVING ALL TRAFFIC RULES AND REGULATIONS. IGNORING THESE COULD RESULT IN DEATH OR INJURY. YOU WILL BE DISQUALIFIED FROM ALL SBTS and BREAKAWAY EVENTS FOR NOT ADHERING TO THESE RULES.

Timing

This ride is being chip timed by E8 Timing.

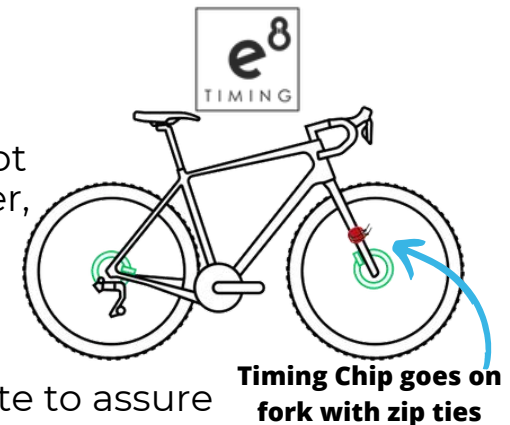
CHIPS: Please attach the chip to the DRIVE (right) side of your fork. If you do not want to put the chip on your fork, you may put it on your shoe or crank, however, it may cause timing inaccuracies.

*** We do NOT recommend putting your chip in your pocket.***

We will have starting timing mat, and intermediate timing points along the route to assure no one cuts the course. Look for a series of cones and a mat when out on the course.

TIMING FINISH: The finish timing mats will be located at the finishing arch. Make sure you roll over the timing mat so we can get your official time. All timing chips must be returned at the timing finish mat location. The timing chips used must be returned after you finish racing. **The cost of an unreturned timing chip is \$100.**

NUMBER PLATES: Number plates must be put on the front of your bike so that the number is fully visible.



RULES OF THE ROAD & COMMON SENSE

HELMETS REQUIRED



All riders are required to wear an approved helmet and cannot remove it at any time while riding.

NO SUPPORT VEHICLES



No support/follow vehicles are allowed.

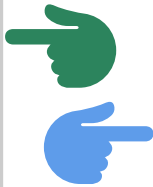
Aid Stations will be well stocked and able to handle rider's needs.

OBEY TRAFFIC LAWS



Riders must ALWAYS obey traffic laws and strictly obey any law enforcement persons or official ride personnel.

PASS ON LEFT, RIDE ON RIGHT



Pass on the left and let yourself be known when doing. After passing, resume riding as far right as safely possible.

NO BLIND CORNER PASSING



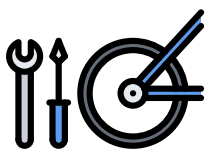
DO NOT PASS riders or vehicles on blind corners.

NO PUBLIC EXPOSURE



No public urination or exposure. Anyone caught using anything other than a porta-head will be DQ'd from the event.

BE YOUR OWN MECHANIC



You are responsible for your own mechanical needs during the event.

STOCK UP AT AID STATIONS



Utilize the aid stations and stock up with the necessary fluids and food you'll need to get yourself to back the finish area.

ALL WEATHER CONDITIONS



Be prepared for extreme changes in weather with clothing and sunblock.

Ride will take place rain, shine, sleet or snow.

NO ENTRY REFUNDS



There are NO REFUNDS. Your entry fee goes to essential trail projects.

NO HEADPHONES/EARBUDS



Headphones/earbuds are NOT permitted during the ride.

RIDER AGE



Each rider is classified according to their age as of December 31st, the year of the event.

NO AEROBARS



No handlebar extensions or additions that mount anywhere EXCEPT the end of the handlebar.

OBEY OFFICIALS



Riders must respect the directions of all course marshals. If you're told to stop by an official YOU MUST STOP!

RIDE START STAGING



All riders must attend the "riders' meeting" held at the staging area 15 minutes prior to the event.

KNOW THE COURSE



The responsibility of keeping on the prescribed course rests with the rider.

STAY ON COURSE



A rider may not leave the prescribed course unless ordered to do so by public authorities or a ride official.

NO SHORTCUTS



Shortcutting and/or cutting trail switchbacks or course is not permitted and may result in disqualification. A rider is required to stay on the designated route.

RULES OF THE ROAD & COMMON SENSE (cont.)

- Laws and ordinances of appropriate jurisdictions shall be observed during participation in the event.
- A rider may be suspended for damaging or destroying public or private property. A rider may be held liable for all costs associated with the damage or destruction.
- Lost & Found officials reserve the right to make changes to the course, delay start times and/or postpone the event as necessary for safety or security purposes or at the request of permit issuers.
- Riders must obey all applicable traffic laws during the event and are encouraged to use common sense, keep their head up and stay in their lane of travel. At no time will there be a closed road.
- For the first 8.3 miles (first paved section) riders in the peloton will have full use of the right lane of travel, but cannot ride left of the yellow line into the oncoming lane at any time during the ride.
- Once the route changes to a dirt road, riders must obey all traffic laws and use common sense, keeping their speed under control.
- Riders should expect vehicle traffic on all roads, along with ATVs, motorcycles, livestock and wild animals. Stay in your lane and follow the rules of the road.
- Once a rider is dropped from the main peloton they must ride as far right as possible in single formation. This applies to both the pavement and dirt sections.

Cancellation, Transfers, & Category Changes

Transfers can be made through your registration account with BikeReg.com. **Transfers need to be made by 6/10.**

BikeReg instructions on how to transfer: [How to Change the Category you Registered for or Transfer your Registration](#)



Prizes & Awards

Pro Men and Women will each be racing for a cash purse. All other categories will be racing for podium awards from our great sponsors.

Awards Ceremony - 3pm to 5pm

- Will be held at the stage to celebrate the victors in style.
- Awards begin in this order: Pro Men & Women, HALF CALF Open, HALF CALF Juniors, MID MOO Men, MID MOO Women, FULL BULL Men, FULL BULL Women



Neutral Roll-Out Start

Neutral roll-out start on Highway 70 until the turn off at West Street (approximately 0.1 miles).

Riders **MUST** stay right and not cross the road divider on Highway 70 (during the neutral roll out).

During a “Rolling Enclosure”, vehicle traffic will be stopped and controlled by course officials and/or law enforcement to ensure rider safety and to keep the peloton moving swiftly. Once the peloton has passed through, the intersection will re-open to vehicle traffic. Rolling Enclosures are estimated to take no more than 10 minutes at each intersection. Riders riding behind the peloton must obey all rules of the road, as there will be no Rolling Closures in place.

Plumas National Forest

This event is under special use permit with the Plumas National Forest. Non-Discrimination Notice. In accordance with Federal law and U.S. Department of Agricultural policy, this institution is prohibited from discriminating on the basis of race, color, national origin, sex, age or disability. (Not all prohibited bases apply to all programs.) To file a complaint of discrimination, write USDA Director Office of Civil Rights, Room 326-W, Whitten Building, 1400 Independence Avenue, SW, Washington, D.C. 20260-9310 or call (202) 720-5964 (voice and TDD). USDA is an equal opportunity provider and employer.



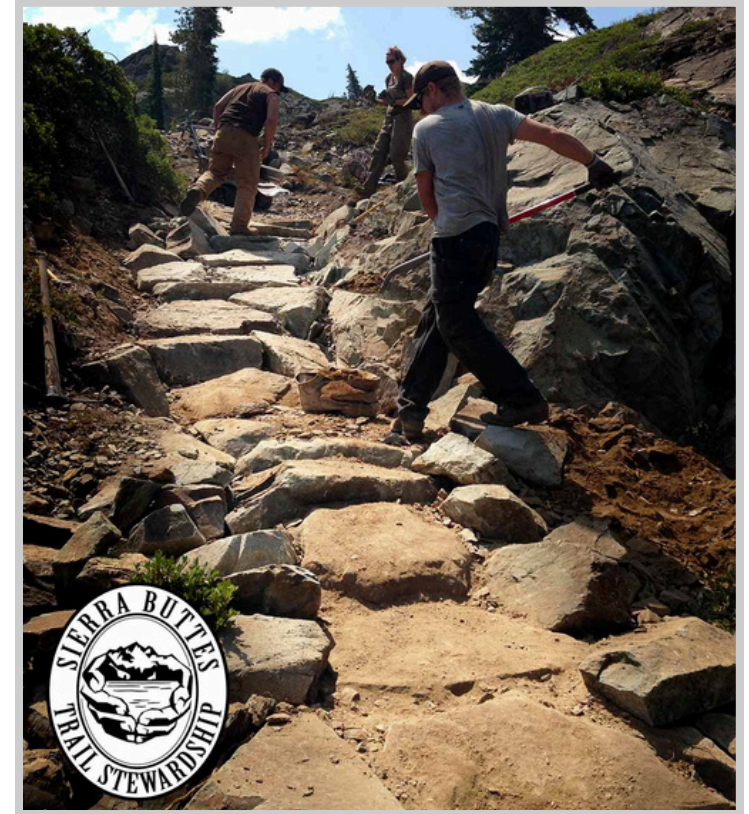
About Sierra Buttes Trail Stewardship

Sierra Buttes Trail Stewardship is a non-profit organization that builds and maintains multi-use trails in the Sierra Buttes, Tahoe, Plumas and Lassen National Forests.

Our mission is building sustainable recreation-based communities through stewardship, job creation and world-class events. Providing quality outdoor experiences through trail construction and maintenance in the Lost Sierra.

It is our goal to maintain, restore, and enhance trails in the Tahoe, Plumas and Lassen National Forests in an environmentally sensitive and ecologically responsible fashion. We exist to bring a connection between the land and the people who enjoy it by teaching stewardship, restoring historic trail routes and creating new paths through the Lost Sierra.

This region offers unique natural beauty, remote accessibility and diverse multi-use recreational opportunities. The work performed by our organization and volunteers is helping maintain enjoyable backcountry trail access for generations to enjoy.



OTHER SBTS EVENTS

Join us for More Adventure!

DOWNIEVILLE CLASSIC ESTD 1995
PRESENTED BY **SANTA CRUZ** Aug. 6-9



REGISTER
HERE

Mountains to Meadows
Endurofest Sept. 10-13
QUINCY, CA



REGISTER
HERE



PARTNERS



If you completed the registration online, you do not need to do anything further. If you plan to register onsite, please print and complete the racer waiver.

If you have purchased a camping pass and have family or friends camping with you, all non-racing campers **MUST** complete an event waiver via **THIS GOOGLE FORM**.

Alternatively, you may access a PDF copy of the waiver here and have them ready to turn in to the Camp Hosts or Packet Pickup staff upon arrival. Parents must complete a waiver for any family members camping under the age of 18.

